



SERVISOUD

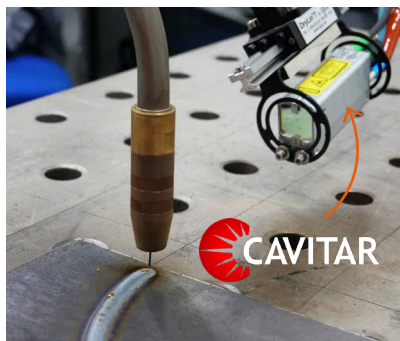
Europe Technologies group

SERVICAM - PORTABLE MONITORING AND SUPERVISION WELDING SYSTEM



Do you want to monitor the welding process, remotely operate it, or trace and analyse your data?

SERVISOUD, in partnership with CAVITAR, offers an innovative welding **monitoring system**.



Cavitar's revolutionary welding camera uses **laser illumination** to see **through the welding arc**.



SERVICAM's: Portable weld **monitoring** and **supervision** system.

Integrated software with an interface designed for welders (horizontal/vertical lines for tracking).

Camera and accessory storage

Robust and portable, equipped with casters and a telescopic handle connectivity (camera, network, external storage, remote screen)



15" or 21" touch screen

Connectivity (camera, network, external storage, remote screen)

Accessories:

- Computer accessories (industrial keyboard and mouse)
- Articulating Camera arm mount





SERVICAM APPLICATIONS

1) VISUALIZATION (CAVITAR)

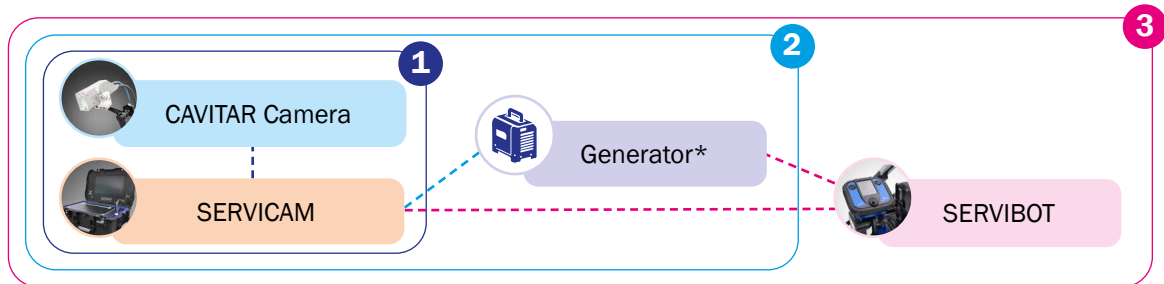
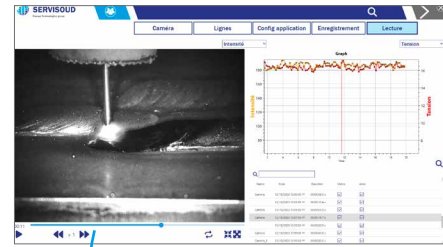
- Welding **Visualization**
- Image **saving**

2) MONITORING (SERVICAM)

- Display of generator parameters in parallel with the image
- Saving and replaying settings synchronized with images

3) TELEOPERATION (SERVIBOT)

- Welding teleoperation with the SERVIBOT RC remote control
- Display of SERVIBOT system parameters and welding energy (heat input)



**subject to compatibility: MODBUS communication required*

Other advantages

- Accelerated training of welders (manual, mechanized, automatic, etc)
- Understanding complex phenomena in welding (look for parameters, fault analysis, etc.)

QUALITY & SAFETY

Our portable welding supervision solution guarantees the welder's **productivity**, **quality**, and **security**.

- Controlling welding parameters and welding intensity in real-time
- Analyze faults with parameter recordings and video
- Traceability of welding data
- Distance of the welder from fumes and radiation
- Improvement of working comfort (ergonomics of the workstation) and prevention of MSDs (Musculoskeletal Disorders).

TECHNICAL SPECIFICATIONS

	SERVICAM 15" Screen	SERVICAM 21" Screen
Dimensions (L x l x h)	600 x 400 x 340 mm	650 x 510 x 300 mm
Weight	18 kg	28 kg
Connections	2 cameras, 1 com port GbE, 1 HDMI, 3 USB	

Compatible processes:

- MIG/MAG
- TIG
- PLASMA
- Hybrid processes