



SERVISOUD

Europe Technologies group



SERVILATTES-CERAMIC WELD BACKINGS FOR INDUSTRIAL WELDING








SERVISOUD, a EUROPE TECHNOLOGIES group company



INNOVATION FOR WELDERS

**WELDING - CUTTING CARRIAGES
SPECIAL - RETROFIT MACHINES
INDUSTRIAL WELDING SUPPLIES
EQUIPMENT RENTAL (SERVILOC)
CERAMIC WELD BACKINGS
AUTOMATION MATERIALS**

CONTENTS

ABOUT SERVISOUD	3
SERVILATTES - CERAMIC WELD BACKINGS.....	4
NON-POROUS CERAMIC WITH ALUMINUM ADHESIVE.....	5
 Flat weld backing.....	5
 Rabbet weld backing.....	13
 Shoulder weld backing.....	15
 Round weld backing	18
 Circular weld backing	20
NON-POROUS CERAMIC ON "FLEX" TYPE FLEXIBLE METALLIC SUPPORT	21
 Flat weld backing.....	21
METALLIC BLOCK WELD BACKING.....	22
 BLM-BLMHT smart backing holder.....	22
SAFETY DATA.....	23
TECHNICAL TABLE	26

ABOUT SERVISOUD

SERVISOUD designs and manufactures welding trolleys and special machines as well as supporting you with all industrial supplies needed for individual welder protection, cutting and welding, including a wide range of non-porous white ceramic weld backings with aluminum adhesive and on flexible metal supports.

SERVILATTES ceramic weld backings ensure a compact root pass in all positions. They are essential and represent a significant gain in productivity.

Our sites in St Nazaire and Lorient offer a wide range of welding equipment for rent as well as for sale (MIG/MAG generators, TIG, ARC, plasma cutting, positioning and smoke extraction equipment and more).

SERVILATTES - CERAMIC WELD BACKINGS

During welding, the backing is a support for the weld pool helping to achieve a compact root pass in all single-sided welding positions.

CHARACTERISTICS

Many rigid and articulated weld backing profiles are available to match a wide range of welding joint configurations:

- Flat weld backing
- Shoulder weld backing
- Raised weld backing
- Round weld backing

They are made of a water repellent ceramic, and are secured with an adhesive aluminum tape or a metal rail to adapt to any welding position.



ADVANTAGES

The ceramic weld backing procedure generates a significant productivity gain.

Increase in the first pass deposit rate	Simplification of chamfering preparations	Total penetration without turning workpieces
Total penetration of hard-to-reach joints in reverse position	Eliminates the risk of weld collapse	Eliminates the need for grinding, gouging and recovery on the weld root

The **non-porous white ceramic** is very dense, and has a low rate of moisture recovery (0.1%) combined with a high melting point allowing use at a high welding density of up to 400A.

NON-POROUS CERAMIC WITH ALUMINUM ADHESIVE

FLAT

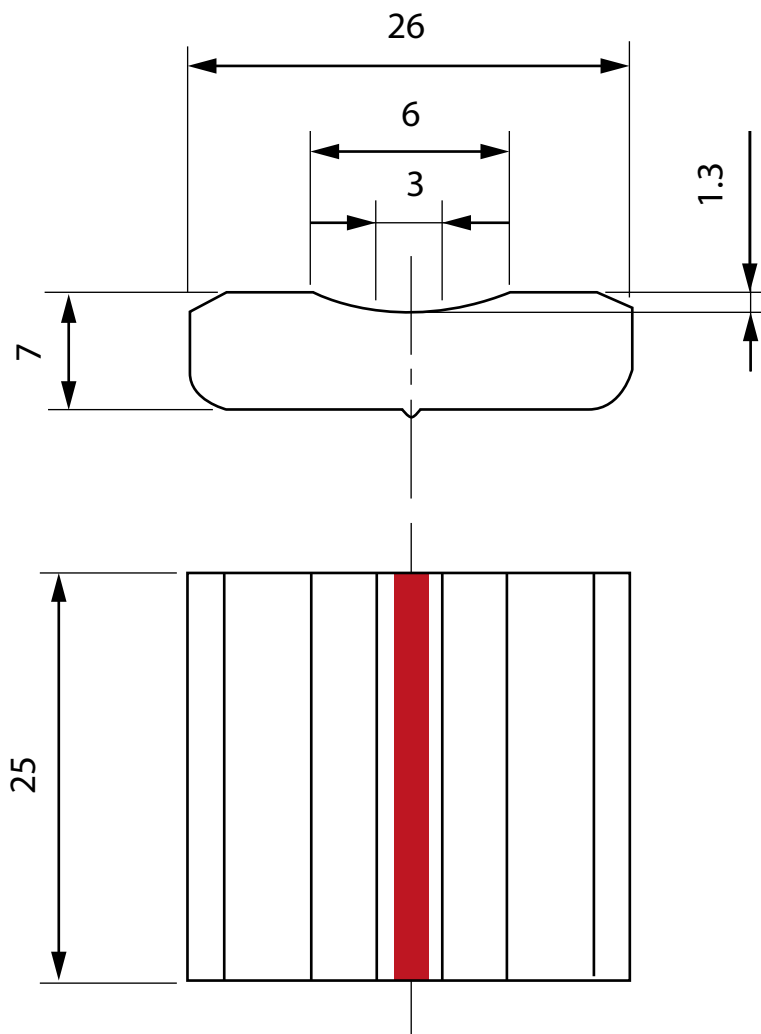
Flat weld backing

LT00 CERAMIC WELD BACKING

REF. -PROFILE | LT00 G6 PAV25

Type:	Flat weld backing with aluminum adhesive
Block length:	25mm
Groove width:	6mm
Groove depth:	1.3mm
Packaging:	Box of 30
Backing length:	0.6m and 18m/box

Reference: LATT 0012



Rabbit

Flange

Round

Circular

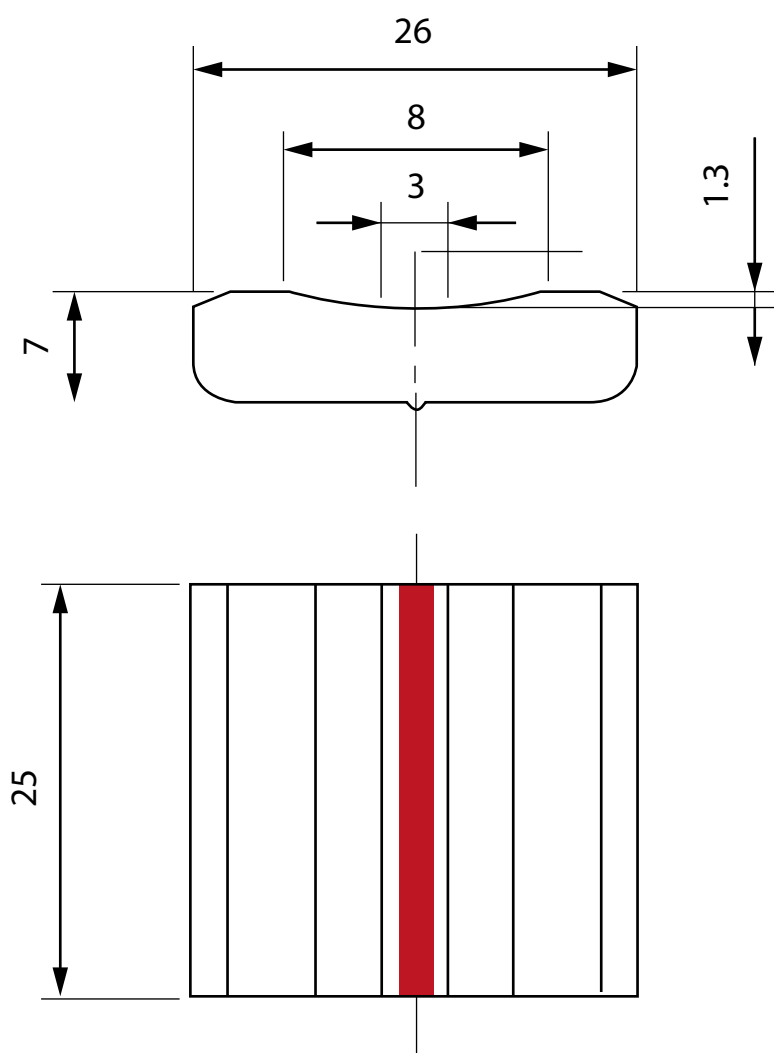
Flex

Backing block

NON-POROUS CERAMIC WELD BACKING LT01 TYPE 1**REF. -PROFILE | LT01 G8 PAV25**

Type:	Flat weld backing with aluminum adhesive
Block length:	25mm
Groove width:	8mm
Groove depth:	1.3mm
Packaging:	Box of 30
Backing length:	0.6m and 18m/box

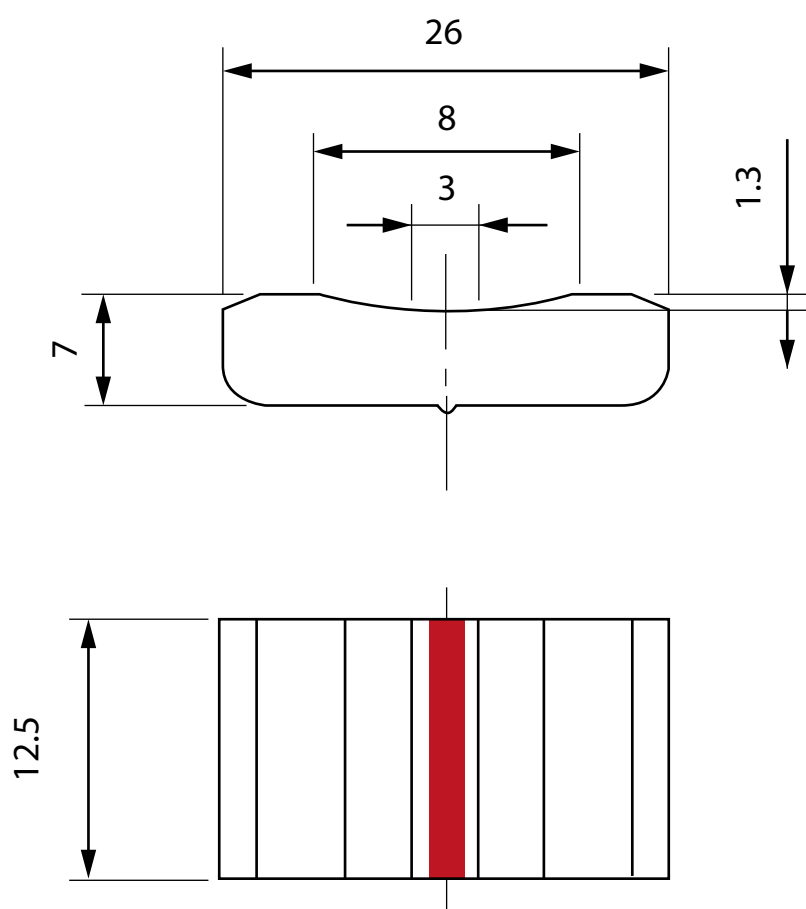
Reference: LATT 0014



NON-POROUS CERAMIC WELD BACKING LT01 TYPE 2

REF. -PROFILE | LT01 G8 PAV12.5

Type:	Flat weld backing with aluminum adhesive
Block length:	12.5mm
Groove width:	8mm
Groove depth:	1.3mm
Packaging:	Box of 30
Backing length:	0.6m and 18m/box
Reference:	LATT 0013



FLAT

Rabbit

Flange

Round

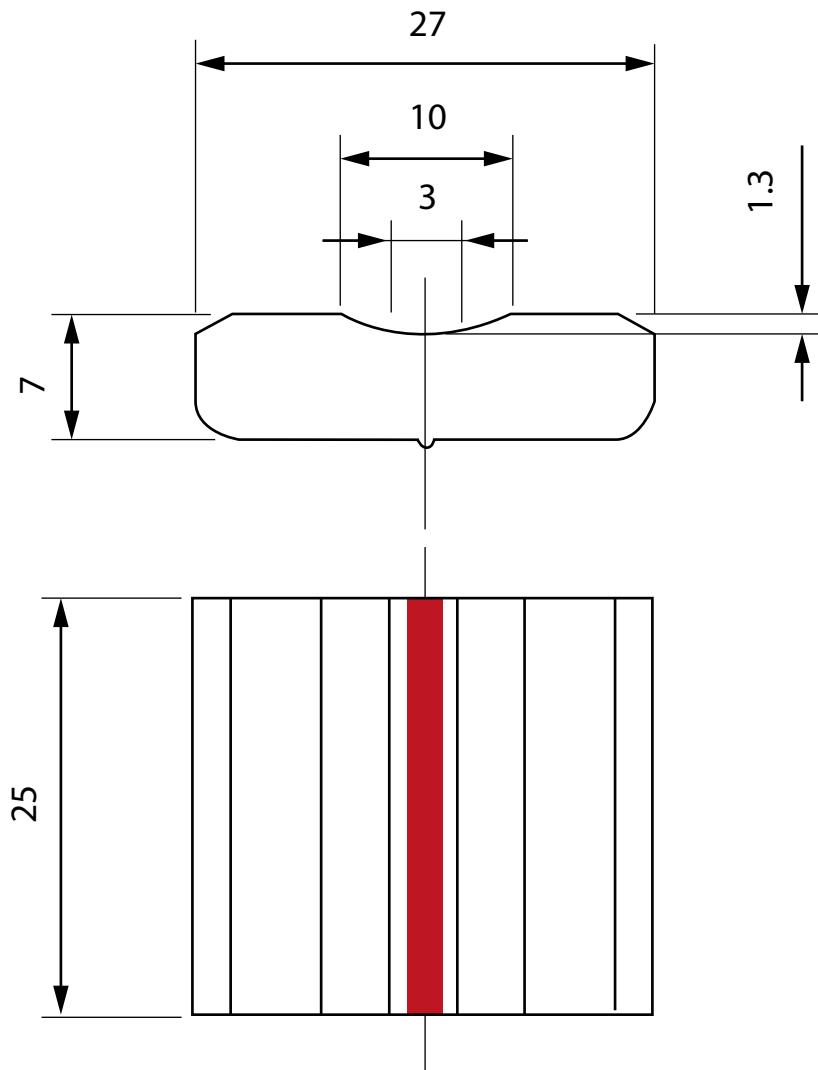
Circular

Flex

Backing block

NON-POROUS CERAMIC WELD BACKING LT02**REF. -PROFILE | LT02 G10 PAV25**

Type:	Flat weld backing with aluminum adhesive
Block length:	25mm
Groove width:	10mm
Groove depth:	1.3mm
Packaging:	Box of 30
Backing length:	0.6m and 18m/box
Reference:	LATT 0021



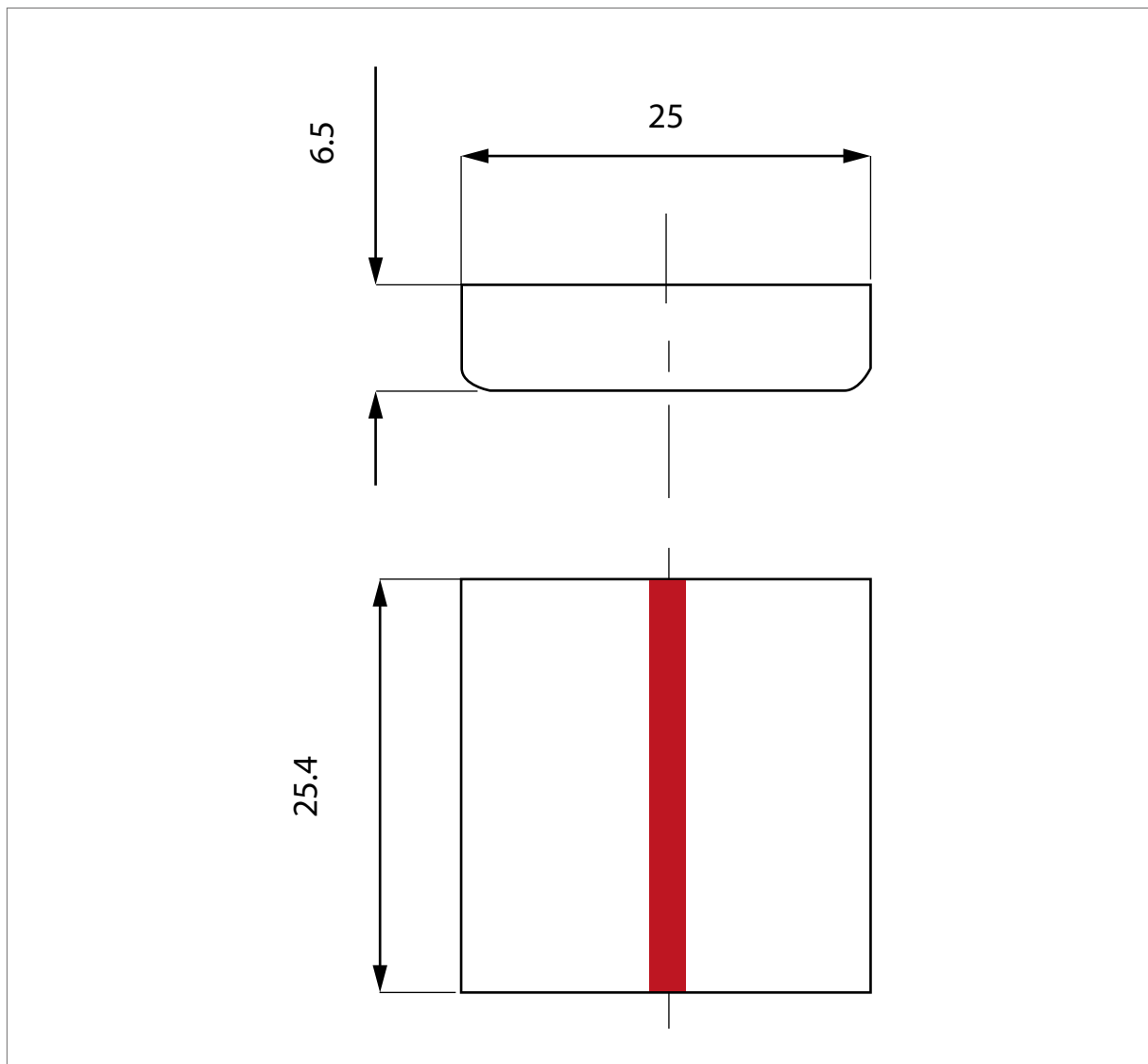
NON-POROUS CERAMIC WELD BACKING LT02D

REF. -PROFILE | LT02D G00 PAV25

Type:	Flat weld backing with aluminum adhesive
Block length:	25mm
Groove width:	No groove
Groove depth:	Not applicable
Packaging:	Box of 30
Backing length:	0.6m and 18m/box

Reference: LATT 0020

Available in 12.5 mm / Reference: LATT 0019



FLAT

Rabbit

Flange

Round

Circular

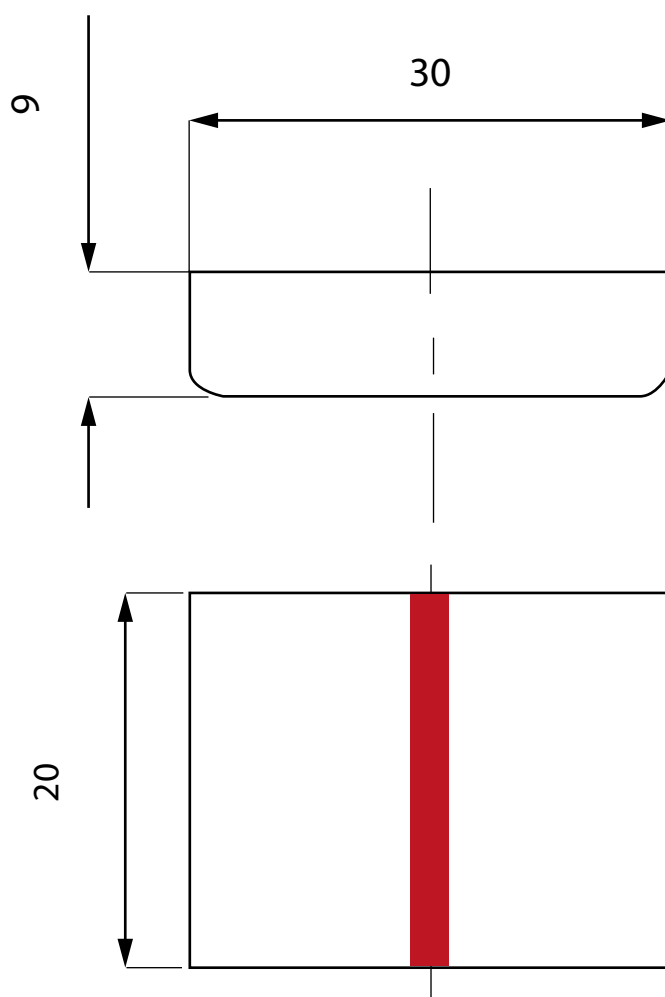
Flex

Backing block

NON-POROUS CERAMIC WELD BACKING LT03W**REF. -PROFILE | LT03W G00 PAV20**

Type:	Flat weld backing with aluminum adhesive
Block length:	30mm
Groove width:	Without groove
Groove depth:	Not applicable
Packaging:	Box of 30
Backing length:	0.6m and 18m/box

Reference: LT03W G00 PAV20

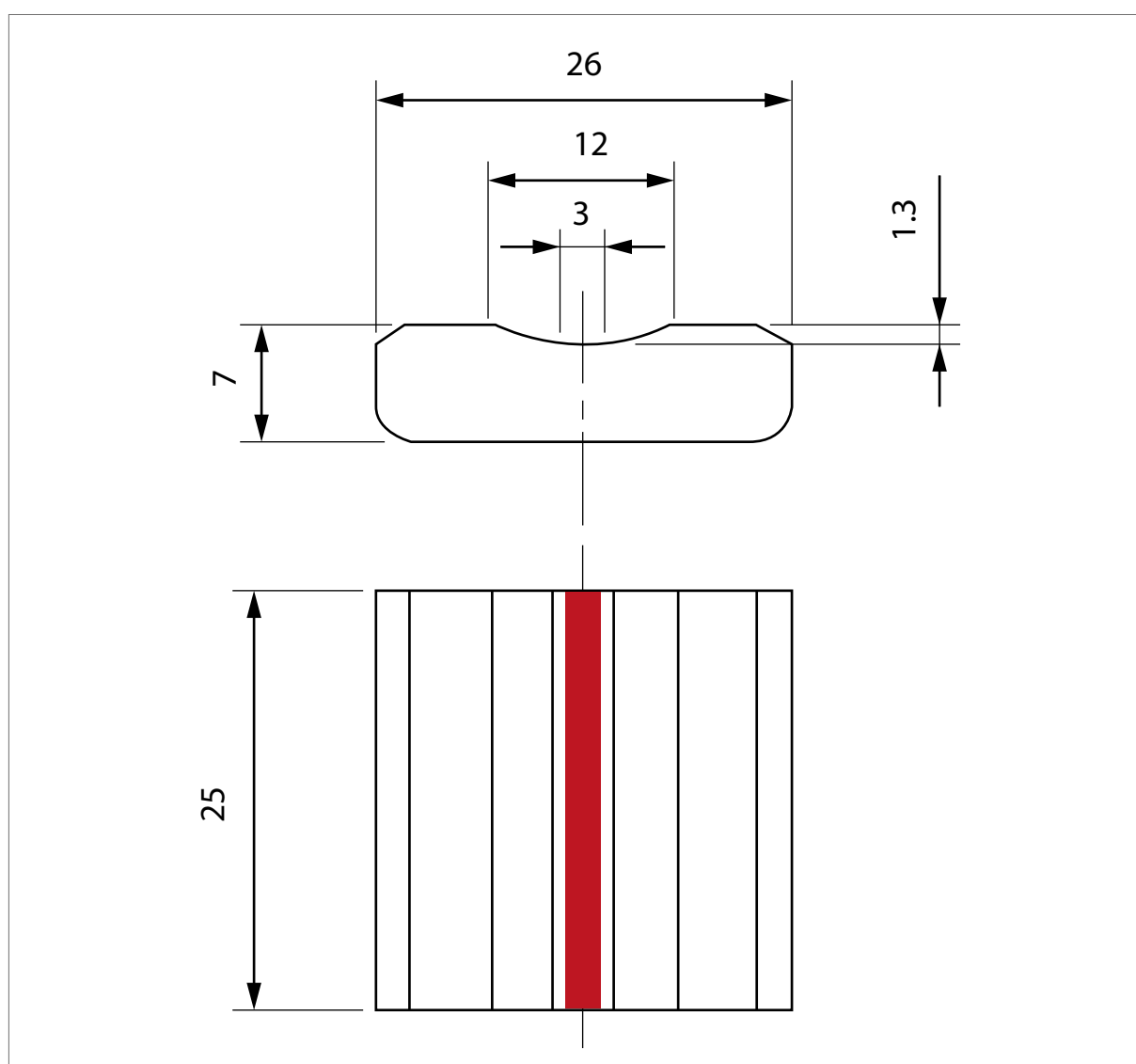


NON-POROUS CERAMIC WELD BACKING LT05

REF. -PROFILE | LT05 G12 PAV25

Type:	Flat weld backing with aluminum adhesive
Block length:	25mm
Groove width:	12mm
Groove depth:	1.3mm
Packaging:	Box of 30
Backing length:	0.6m and 18m/box

Reference: LATT 0018



FLAT

Rabbit

Flange

Round

Circular

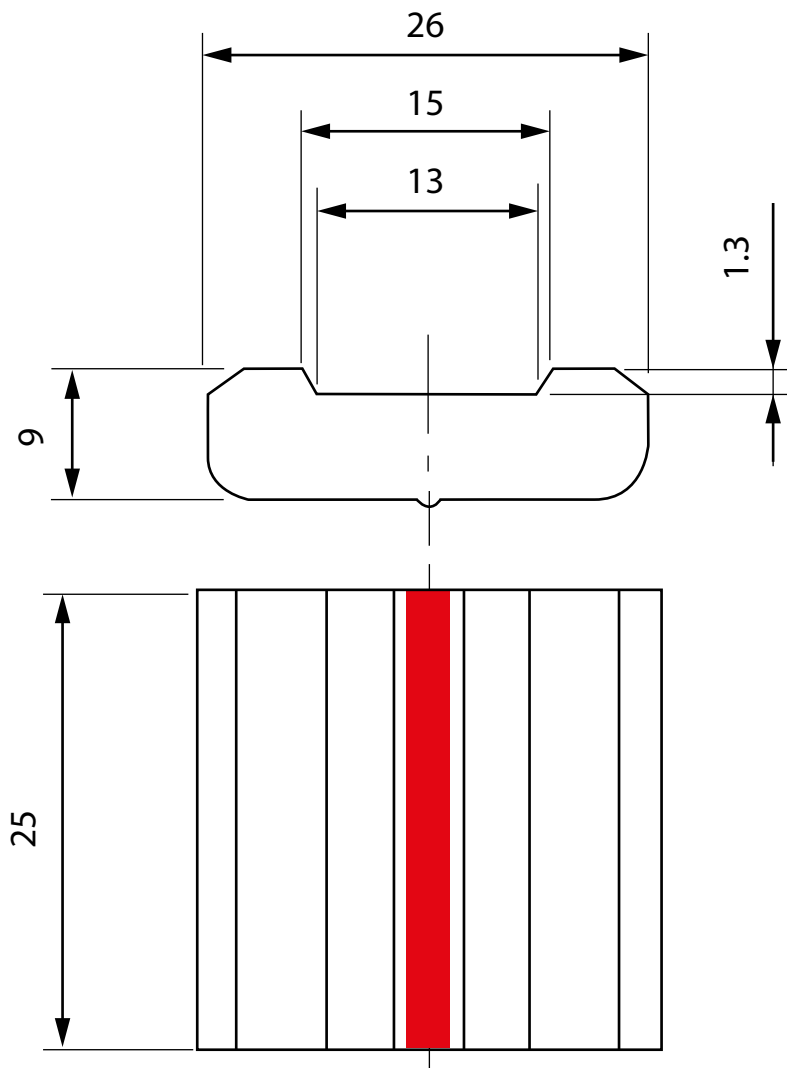
Flex

Backing block

NON-POROUS CERAMIC WELD BACKING LT05TT**REF. -PROFILE | LT05TT G13 PAV25**

Type:	Flat weld backing with aluminum adhesive
Block length:	25mm
Groove width:	13mm
Groove depth:	1.3mm
Packaging:	Box of 30
Backing length:	0.6m and 18m/box

Reference: LATT 0022

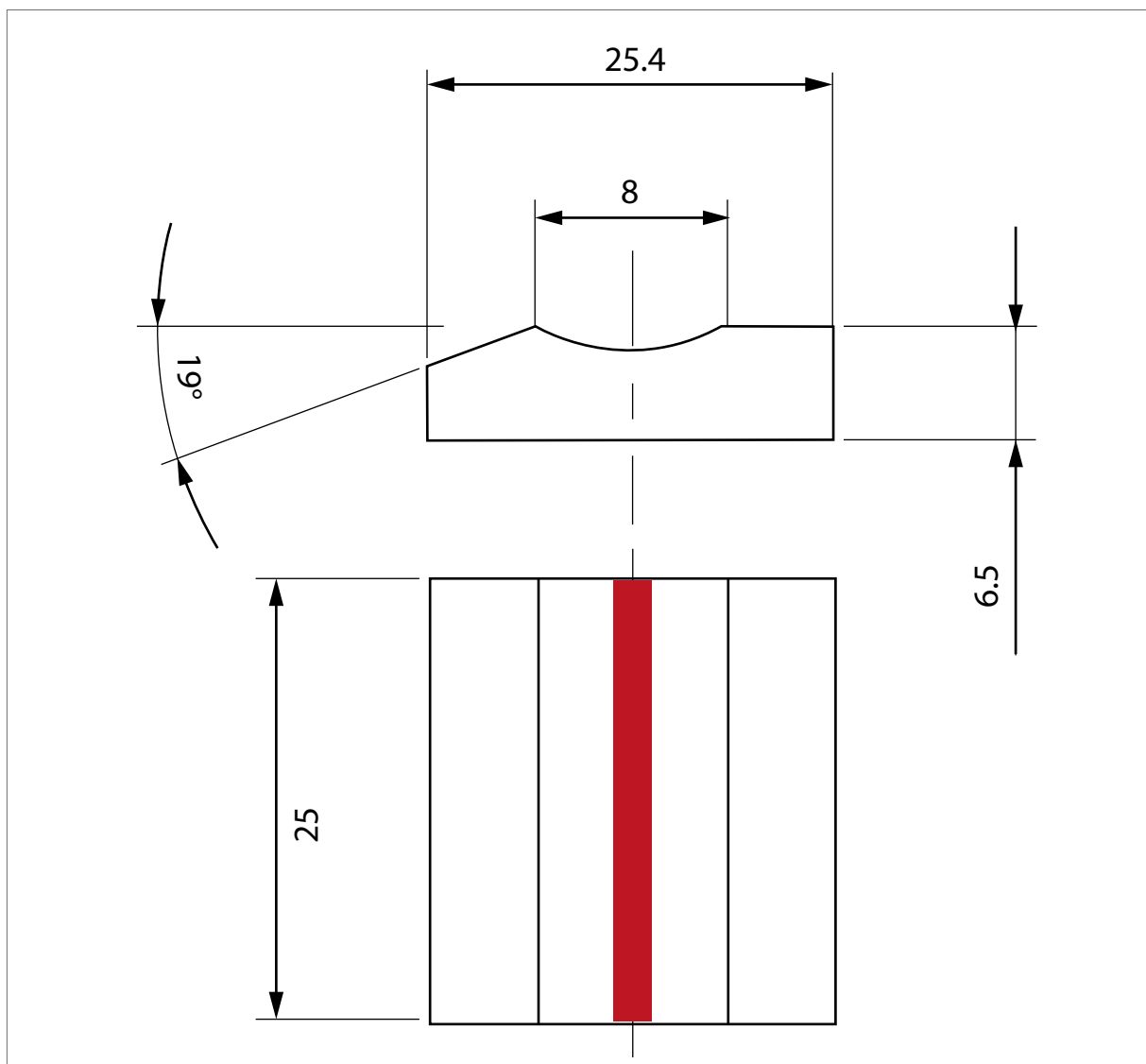


Rabbet weld backing

NON-POROUS CERAMIC WELD BACKING LT03C WITH RABBET - TYPE 1**REF. -PROFILE | LT03C G8 PAV25**

Type:	Flat weld backing with aluminum adhesive
Block length:	25mm
Groove width:	8mm
Groove depth:	1.3mm
Packaging:	Box of 30
Backing length:	0.6m and 18m/box

Reference: LATT 0017



Flat

RABBET

Flange

Round

Circular

Flex

Backing block

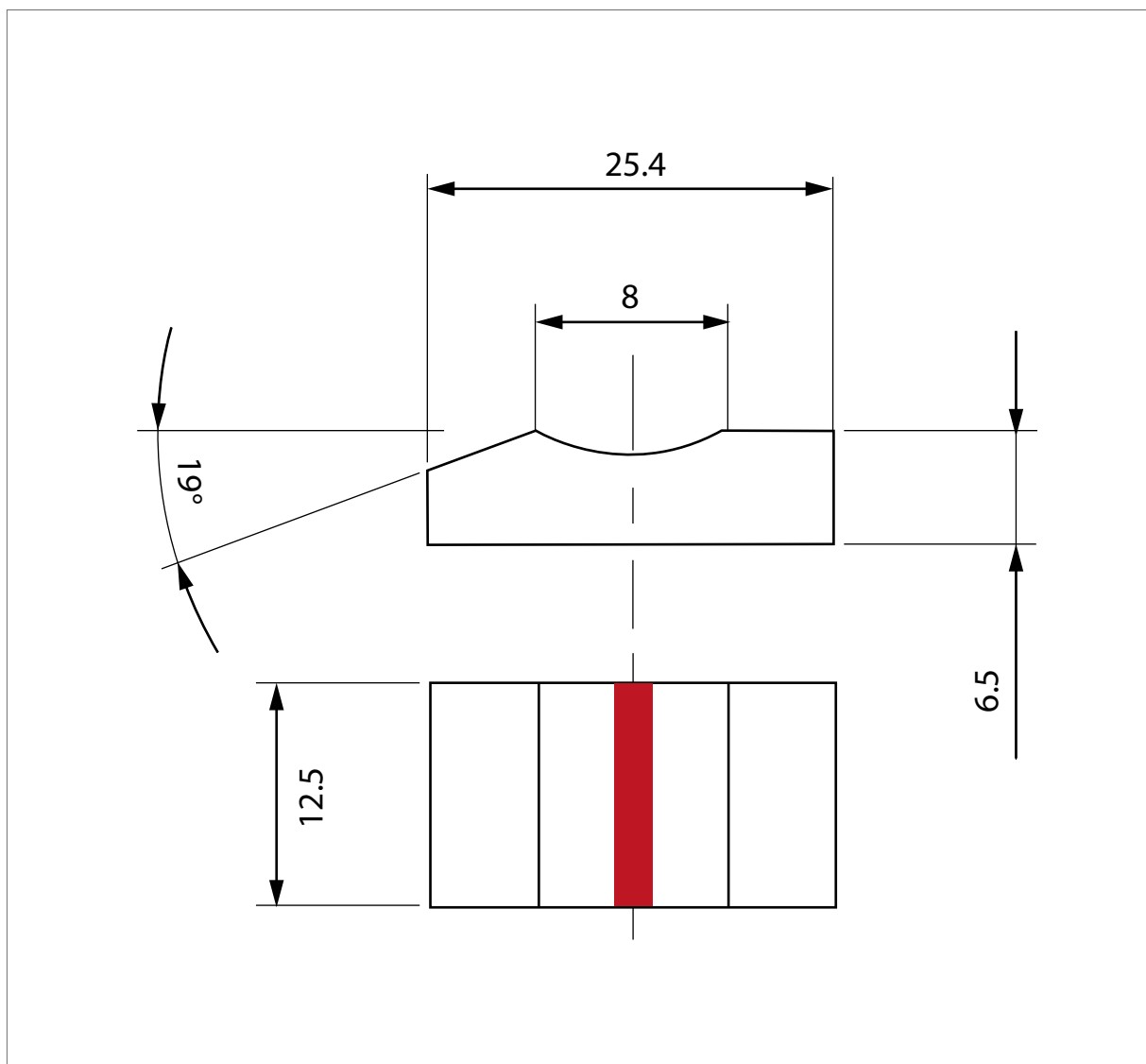
Rabbit weld backing

NON-POROUS CERAMIC WELD BACKING LT03C WITH RABBET - TYPE 1

REF. -PROFILE | LT03C G8 PAV12.5

Type:	Flat weld backing with aluminum adhesive
Block length:	12.5mm
Groove width:	8mm
Groove depth:	1.3mm
Packaging:	Box of 30
Backing length:	0.6m and 18m/box

Reference: LATT 0016

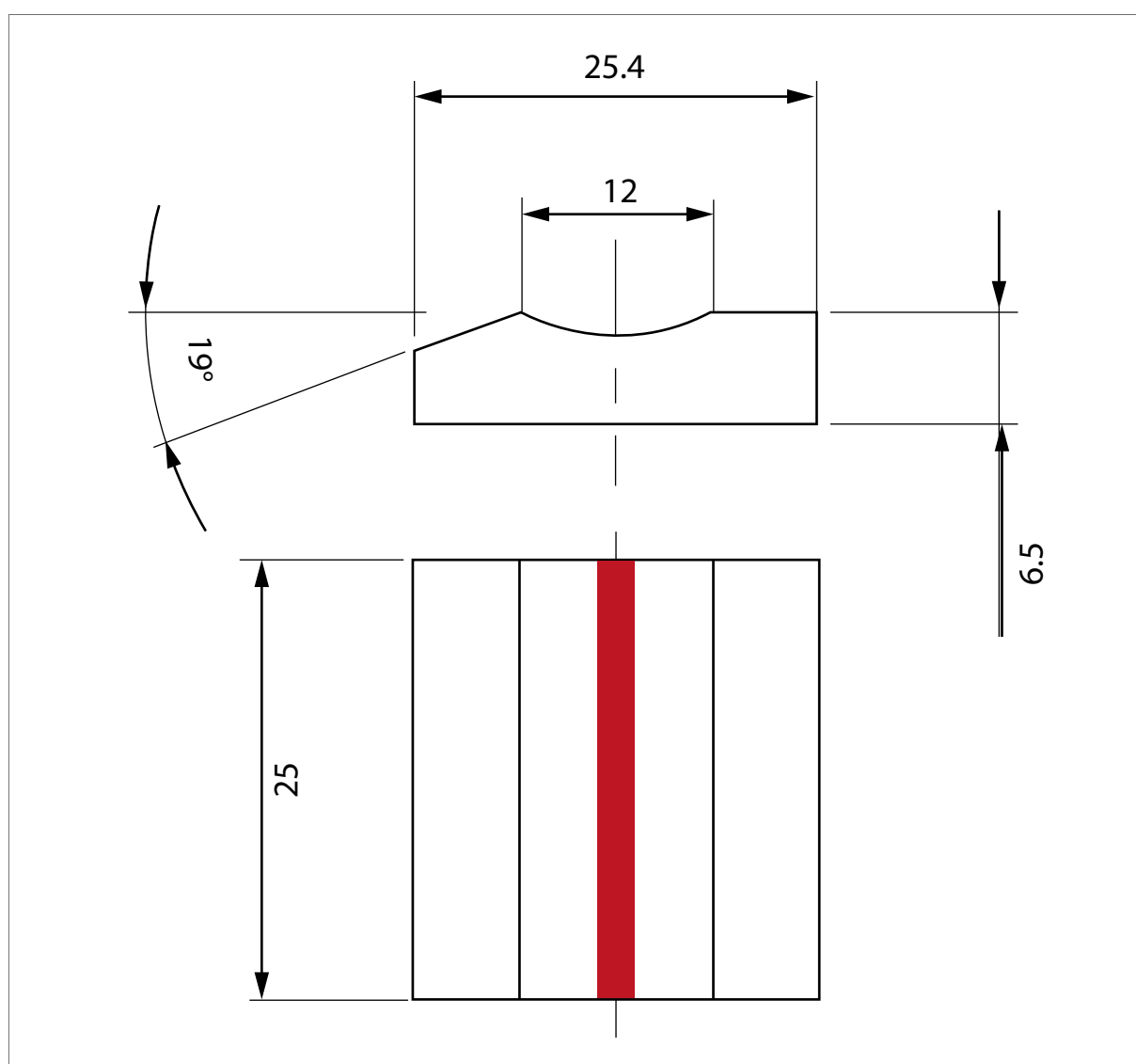


NON-POROUS CERAMIC WELD BACKING LT03C WITH RABBET - TYPE 2

REF. -PROFILE | LT03C G12 PAV25

Type:	Flat weld backing with aluminum adhesive
Block length:	25mm
Groove width:	12mm
Groove depth:	1.3mm
Packaging:	Box of 30
Backing length:	0.6m and 18m/box

Reference: LATT 0015



RABBET

Flat

Flange

Round

Circular

Flex

Backing block

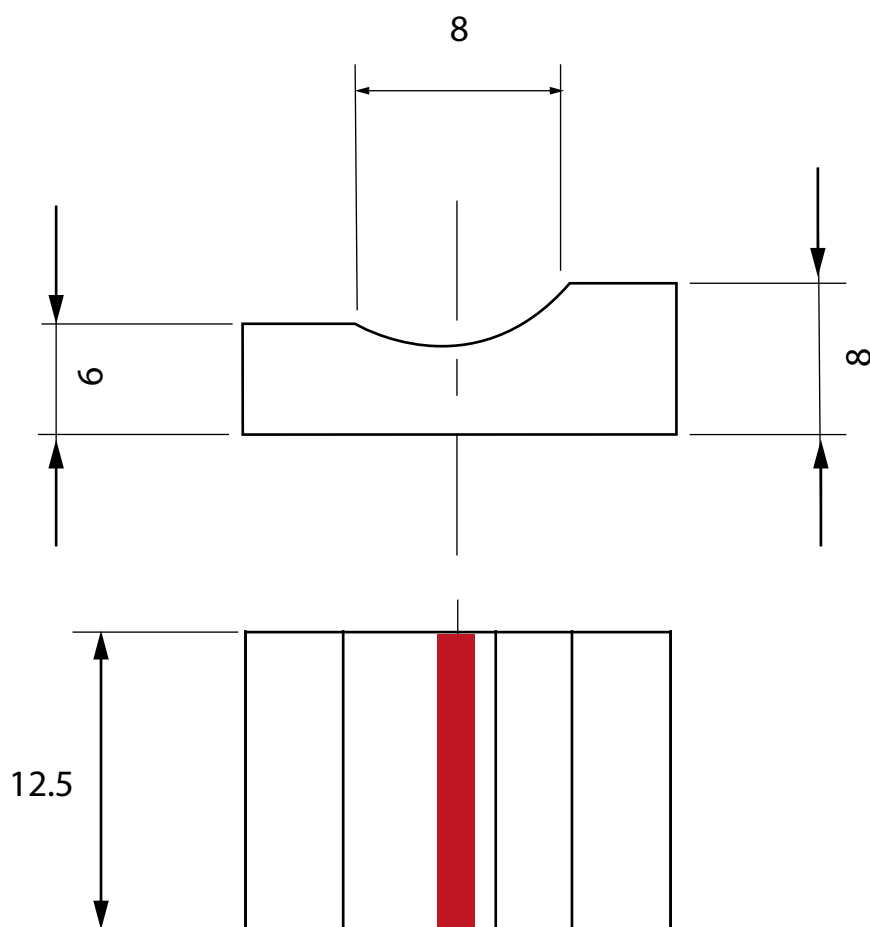
Shoulder weld backing

NON-POROUS CERAMIC WELD BACKING LT03M-TYPE1

REF. -PROFILE | LT03M G8 PAV12.5

Type:	Flat weld backing with aluminum adhesive
Block length:	12.5mm
Groove width:	8mm
Groove depth:	6-8mm
Packaging:	Box of 30
Backing length:	0.6m and 18m/box

Reference: LATT 0001

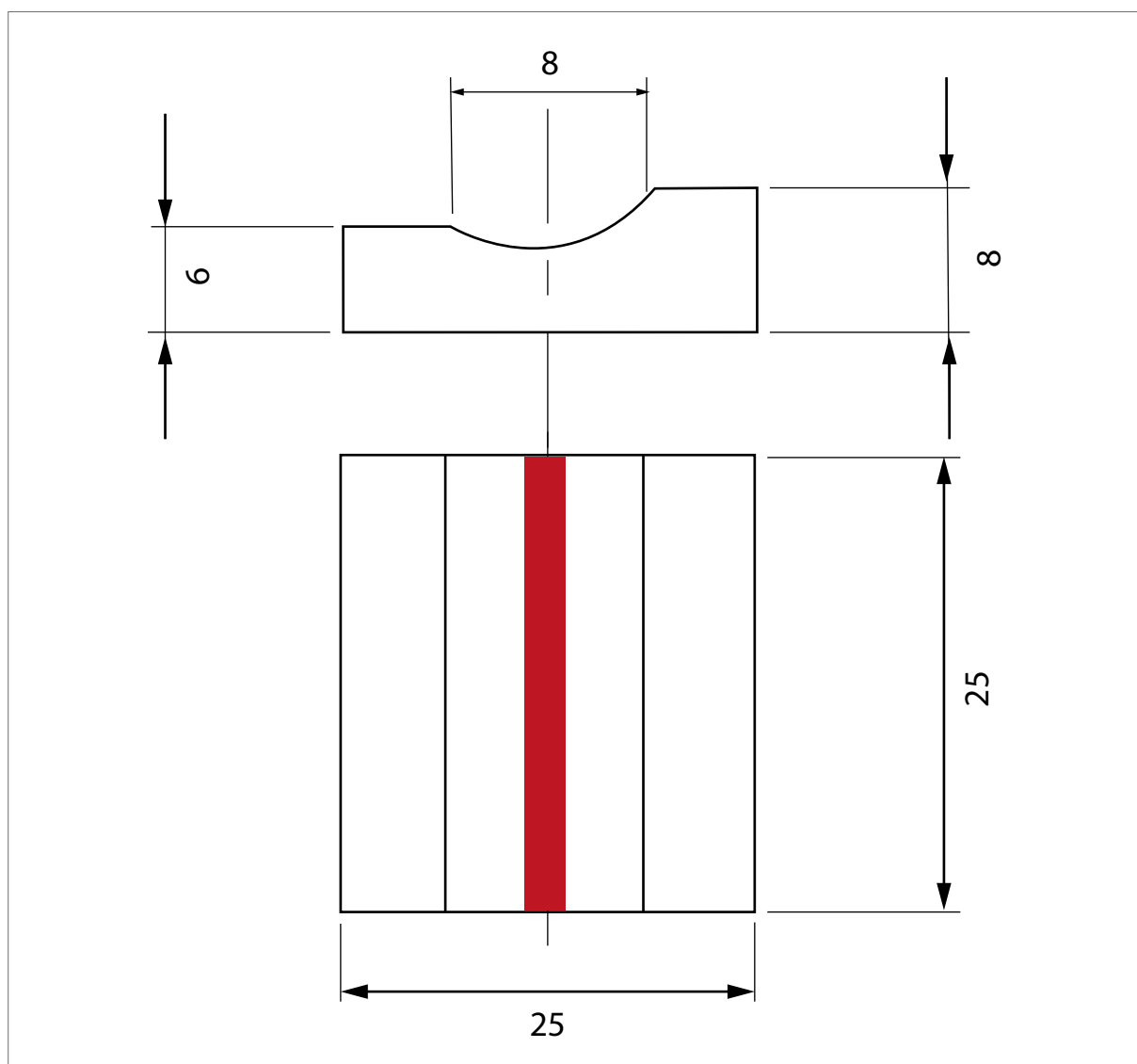


NON-POROUS CERAMIC WELD BACKING LT03M-TYPE 2

REF. -PROFILE | LT03M G8 PAV25

Type:	Flat weld backing with aluminum adhesive
Block length:	25mm
Groove width:	8mm
Packaging:	Box of 30
Backing length:	0.6m and 18m/box

Reference: LATT 0002



SHOULDER

Flat

Rabbit

Round

Circular

Flex

Backing block

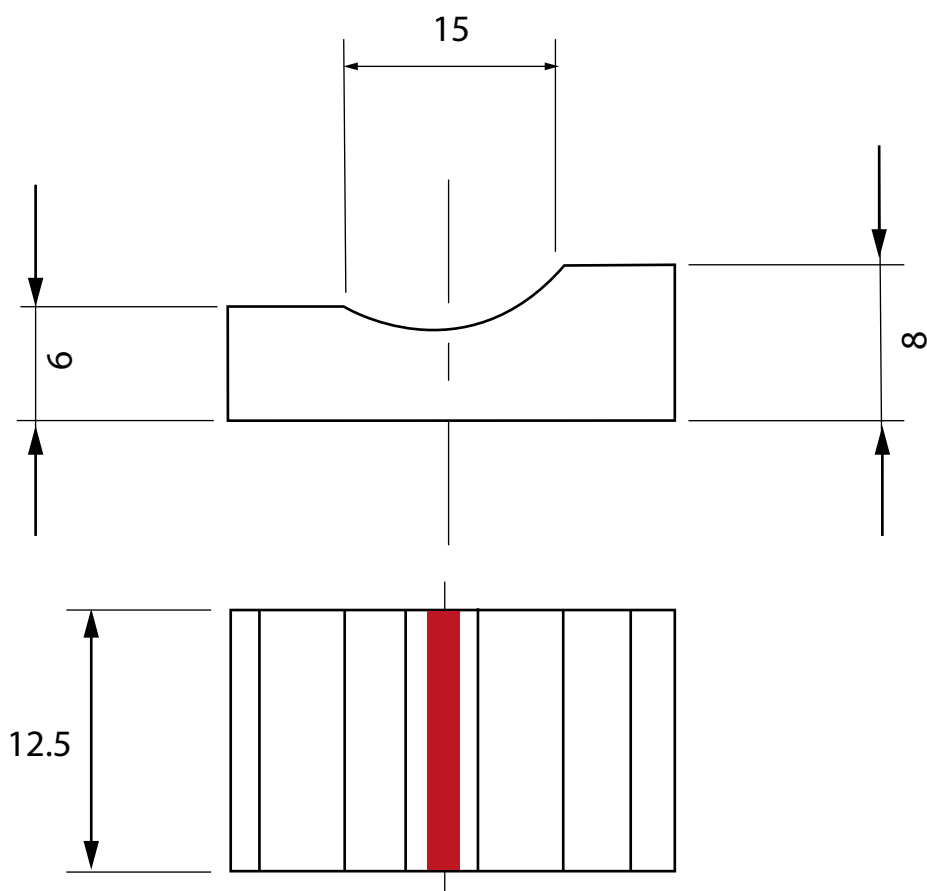
NON-POROUS CERAMIC WELD BACKING LT03M -TYPE 3

REF. -PROFILE | LT03M G15 PAV12.5

Type:	Flat weld backing with aluminum adhesive
Block length:	12.5mm
Groove width:	15mm
Packaging:	Box of 30
Backing length:	0.6m and 18m/box

Reference: LATT 0011

SHOULDER



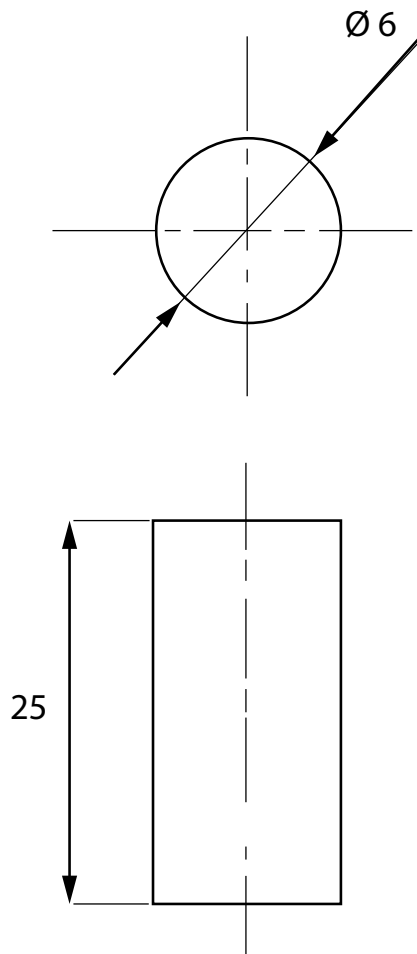
Round weld backing

NON-POROUS CERAMIC WELD BACKING LT06

REF. -PROFILE | LT06 D6/D8/D10/D12/D15/D20/D25

Type: Round weld backing
Diameter: 6 or 8 or 10 or 12 or 15mm or 20mm and 25mm
Round block length: 8mm
Packaging:

	D6	D8	D10	D12	D15	D20	D25
Backings/box	40	40	40	30	20	20	20
Backing length	0.6	0.6	0.6	0.6	0.6	0.6	0.6
Meters/box	24	24	24	18	12	9	9
Reference	LATT0023	LATT0024	LATT0027	LATT0028	LATT0025	LATT0026	LATT0029



ROUND

Flat

Rabbit

Flange

Circular

Flex

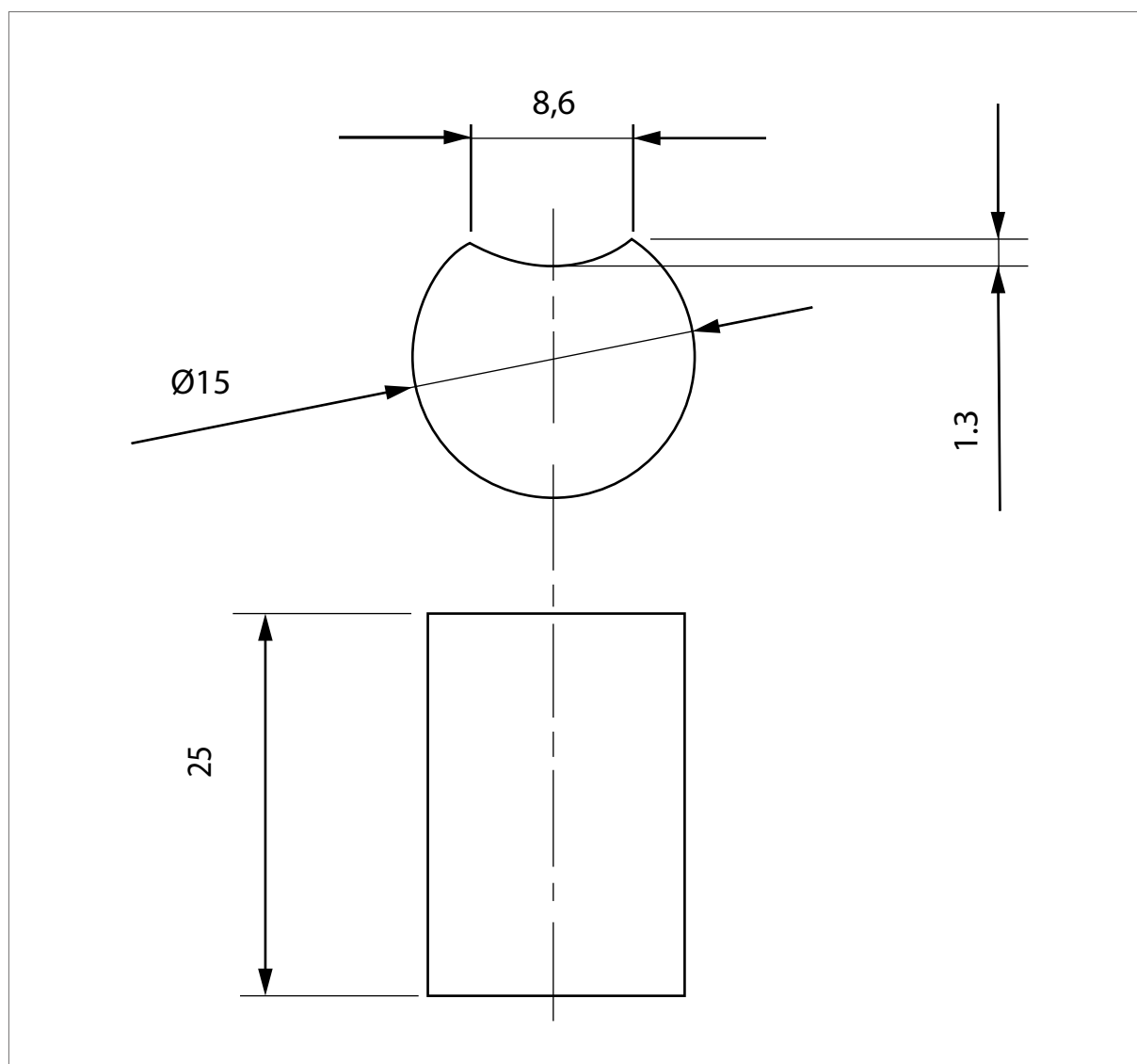
Backing block

NON-POROUS CERAMIC WELD BACKING LT07

REF. -PROFILE | LT07 D15

Type: Round backing with flat face
Diameter: 15mm
Diameter: 25mm
Packaging: Box of 20
Backing length: 0.6m and 12m/box

Reference: LATT 0003



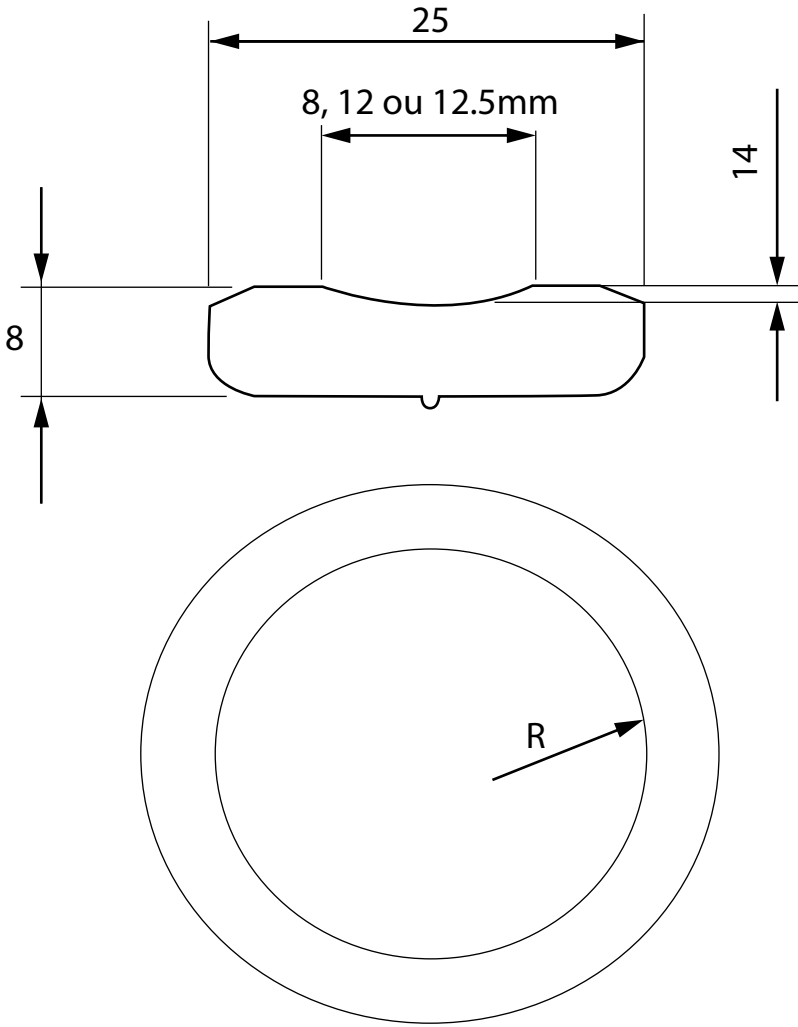
Circular weld backing

NON-POROUS CERAMIC WELD BACKING LTC

REF. -PROFILE | LTC R75 G8/R100 G8/R100 G12/R150 G12.50

Type: Flat circular weld backing
Block radius: 75, 100 or 150mm
Groove width: 8 or 12.5mm
Packaging:

	R75 G8	R100 G8	R100 G12	R150 G12
Backings/box	25	25	25	25
Number of pieces per circle	4	6	6	8
Reference	LATT 0004	LATT 0005	LATT 0006	LATT 0007



CIRCULAR

Flat

Rabbit

Flange

Round

Flex

Backing block

NON-POROUS CERAMIC ON FLEX TYPE FLEXIBLE METALLIC SUPPORT

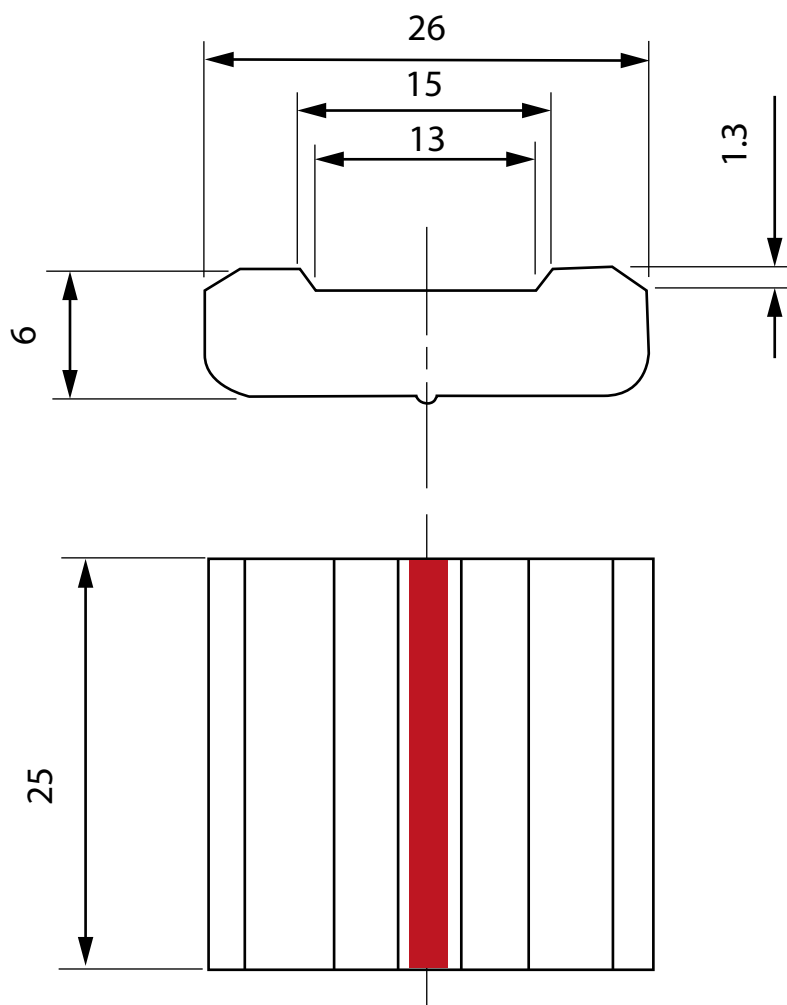
Ceramic FLEX weld backings have flexible metal supports. They are designed to be combined with magnetic weld backings for easy installation without using aluminum adhesive.

Flat weld backing

NON-POROUS CERAMIC WELD BACKING FLEX05TT G13 PAV25

REF. -PROFILE | FLEX05TT G13 PAV25

Type:	Flat weld backing with aluminum adhesive
Block length:	25mm
Groove width:	13mm
Groove depth:	1.3mm
Packaging:	Box of 30
Backing length:	0.6m and 18m/box
Reference:	LATT 0055



FLEX

Flat

Rabbit

Flange

Round

Circular

Backing block

METALLIC BLOCK WELD BACKING

Increase productivity thanks to the magnetic block weld backing. It is the essential accessory for complex construction sites using ceramic backings on a flexible metal support.

The magnetic block allows to position precisely and hold the position of the ceramic weld backings during the welding operation. It facilitates the work of the welder, improving safety and adapting to all types of steel thanks to its clamp force.

BLM-BLMHT smart backing holder

MAGNETIC WELD BACKING BLOCK

REF. -PROFILE | GA 202

Characteristics:	Magnetic
Max temperature:	100°C
Packaging:	Box of 10 blocks
Reference:	BLOC 0005



Flat

Rabbit

Flange

Round

Circular

Flex

BACKING BLOCK

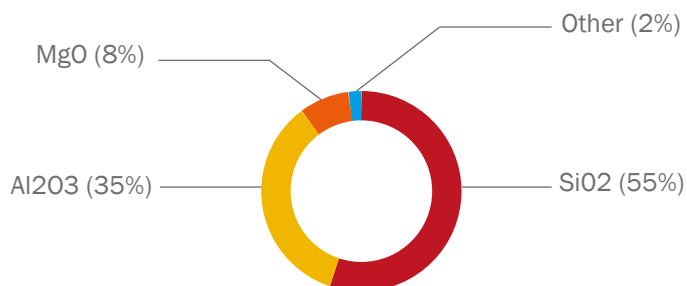
SAFETY DATA

1. Identification

Product	CERAMIC WELD BACKINGS
Product Use	Single-sided welding
Brand name	SERVILATTE
Company	SERVISOUD 3 square champ blanc, ZI du Cormier 49300 CHOLET - FRANCE Telephone 00 33 (0)2 41 58 72 75 Fax. 00 33 (0)2 41 58 84 86

2. Composition/component information

Ceramic made of silico-aluminous fillers



Adhesive aluminum foil. Acrylic adhesive on aluminum foil.

3. Risks identification

No known hazards.

4. First aid

- Eye contact:** In case of eye contact (fragments), rinse with plenty of water or take further medical precautions.
- Skin contact:** No special precautions necessary.
- Inhalation:** In case of dust emission, sneezing, take some fresh air.
In case of persistent breathing difficulties: consult a physician.
- Ingestion:** Consult a physician if necessary.

5. Fire fighting measures

Non-flammable; all means of firefighting are suitable.

6. Accidental release measures

Collect spillages and put it in a suitable container. Dispose of the product in accordance with local regulations.

7. Handling and storage

Handling: The handling of the product itself is not dangerous. However, during welding, the aluminum adhesive produces gas and fumes because of the high welding temperature. Thus, adequate ventilation is recommended.

Storage: Keep away from moisture and store in a dry place.

8. Exposure control/personal protection

No special measures for product handling and use.

General protection measures: Wearing gloves is recommended.

Respiratory protection: Avoid inhaling fumes during welding.
Protection and ventilation according to the work site.
Good ventilation during the welding operation.

Eye protection: Protective glasses.

Body protection: Not applicable.

Ingestion: Do not swallow.

9. Physical and chemical properties

Aspect	Shaped product
Color	White/sand
Odor	None
Ignition temperature	Not applicable
Melting temperature	1430 °C
Explosive characteristics	Not applicable
Density	2.2
Volume weight	2200 kg/m ³ or 137.4 lb/ft ³
Solubility in water	Not applicable
pH	Not applicable
Vapor pressure	Not applicable

10. Stability and responsiveness

Dangerous reactions: No dangerous reactions known under normal conditions of use.

Hazardous decomposition products: Carbon dioxide.

11. Toxicological information

Effects of inhalation: No effect if the product is not heated. Gases and fumes are generated when the product is heated. May cause respiratory tract irritation.

Skin effects: No dangers known to date.

Ingestion: Not applicable under normal conditions of use.

Eye effects: Not applicable under normal conditions of use.

Other information: The product itself is not dangerous. However, during welding, the acrylic adhesive produces gas and fumes because of the high welding temperature which may vary according to working conditions. Thus, adequate ventilation is recommended.

12. Ecological information

There is no specific information available for this product. However, please ensure disposal respects the environment.

13. Disposal information

Waste disposal: Comply with local regulations for collection and incineration with specialized companies.

Waste nomenclature: 15 01 04

14. Transport information

Land transport	ADR/GGVS/RID/GGVE
River transport	ADNR
Marine transport	IMDG/GGV See-Code
Air Transport	ICAO/IATA-DGR

Not considered as dangerous goods.

15. Regulatory information

EEC regulations: Not subject to labeling

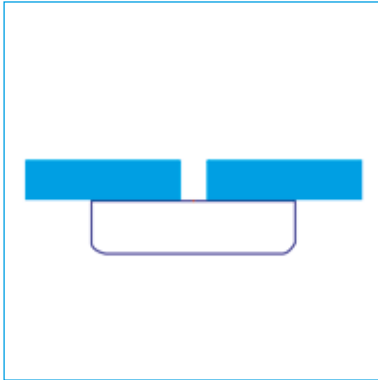
16. Other information

The content and format of this Safety Data Sheet complies with the European Parliament Regulation (EC) No. 1907/2006 (and No. 1272/2008 CLP) as well as the product restrictions.

The information contained in this sheet is based on our current knowledge of the product concerned as of the date of printing.

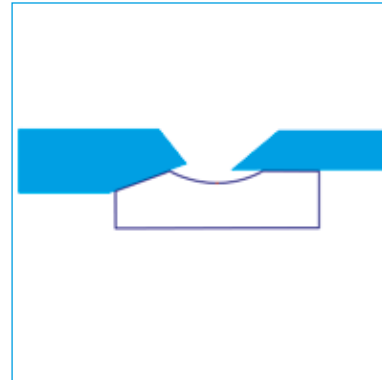
TECHNICAL TABLE

Flat weld backing



Non-porous without grooves for butt welding using bare wire or cored wire when small penetrations are required.

Rabbet weld backing



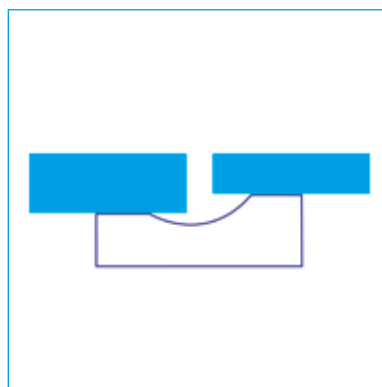
Non-porous grooved raised weld backing for welding sheets of different thicknesses, for bare or cored wire.

Flat weld backing



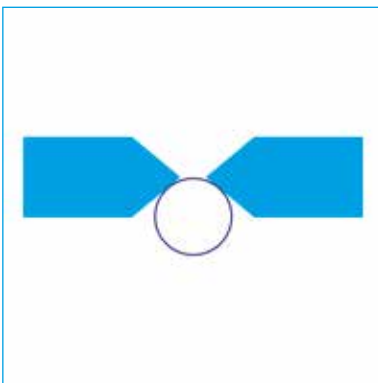
Non-porous concave groove weld backing for V-bevel welding for bare or cored wire - with rather large penetrations required.

Shoulder weld backing



Non-porous grooved weld backing for welding sheets of different thicknesses with 2mm shoulder for bare or cored wire.

Round weld backing



Non-porous round weld backing for X-bevel welding for bare or cored wire.

SERVISLOUD CARQUEFOU - Siège**Unité de fabrication Machines spéciales & Chariots de soudage - R&D**

2 Rue de la Fonderie
44475 Carquefou
Tel: +33 (0)2 51 70 04 94
contact@servisoud.com

SERVISLOUD CAUDAN**Site administratif - Magasin vente en direct**

ZI de Kerpont
10 Chemin de Locmaria Prantarff
56850 Caudan
Tel: +33 (0)2 97 37 63 47
contact@servisoud.com

SERVISLOUD MONTOIR-DE-BRETAGNE**Location de matériel SERVILOC - Magasin vente en direct**

93 rue Anatole France
44550 Montoir-de-Bretagne
Tel: +33 (0)2 40 90 29 05
Std: +33 (0)2 40 90 07 98
contact@servisoud.com

SERVISLOUD CHOLET**Site administratif**

Bureau 1.1, rue de la Gâtine
Parc des activités du tremplin - ZI du Cornier
49300 CHOLET
Tel: +33 (0)2 41 58 72 75
contact@servisoud.com

SERVISLOUD LENCLOÎTRE**Unité de fabrication - Réparation - SAV**

27 rue de St Exupéry
86140 LENCLOÎTRE
Tel: +33 (0)5 49 19 42 22
contact@servisoud.com

